

# OPADD SYMPOSIUM

## MARCH 11, 2009

Wellington Developmental Services  
Planning Group Committee for Seniors

Presenters: Angel Cardinal-Milton,  
Arran Rowles



# History

- Wellington Developmental Services Planning Group recognized the increase in challenges with an aging population as well as utilization of LTC beds by adults with Intellectual Disabilities (ID).
- Group received funding from MCSS and a review was completed assessing the needs of the community of aging people with ID.
- Report in 2006 with 10 recommendations related to collaboration and best practice.



# Intent of review

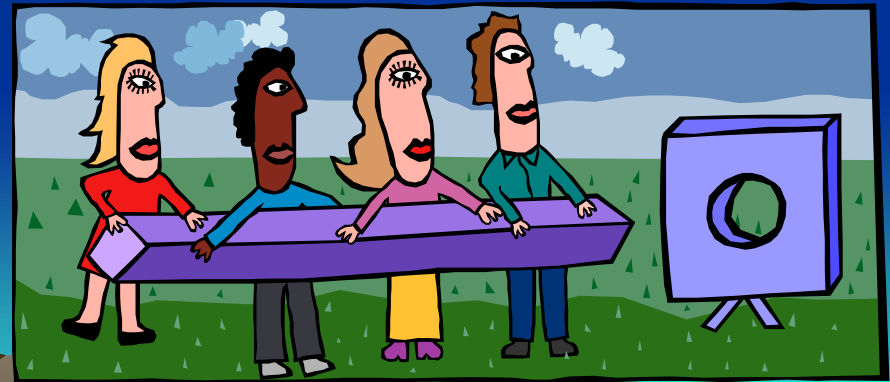
- Interview people from client group
- Literature search and review best practices
- Explore optimal living accommodation and supports for adults with ID who have medically complex needs, through cross sector partnerships
- Build a sustainable system



# Vision

Older adults with ID will have the same access to supports and services as all older adults.

Do Group Exercise...



# Wellington DS Committee for Seniors

Wellington DS Planning table forms DS Committee for Seniors to move forward recommendations from the review.



# Membership

From the Health & Long Term Care Sector:

- St. Joseph's Health Centre
- The Elliott Community
- Trellis Mental Health and Developmental Services
- Waterloo Wellington Community Care Access Centre
- Waterloo, Wellington Local Health Integration Network



# Membership

## From the Developmental Services Sector:

- Central West Network of Specialized Care
- Christian Horizons
- Community Living Guelph Wellington
- County of Wellington
- Family Counselling and Support Services
- Hopewell Children's Homes
- Ministry of Community and Social Services
- Service Resolution Dufferin-Wellington



# Most Significant Finding of Review

- Provide adequate and appropriate support to aging and ailing developmentally disabled people.
- There is a readiness in both sectors, DS and LTC to explore how best to support this vulnerable group of people.

Fact - The developmental services sector and the health and LTC sector face system constraints and fragmented business processes that lead to unmet needs



# 10 Recommendations

## 1. For the Developmental Services Sector of the Ministry of Community and Social Services

- **Provide a briefing paper, proposal and detailed implementation plan**
- **Request assistance to dialogue with the MOHLTC at the LHIN and CCAC level**



# Recommendations (Con't)

## 2. Forge a working relationship with the Ministry of Health and Long Term Care

- Assign a lead to work with MOHLTC, CCAC, and LTC
- Seek to participate in consultation with WWLHIN
- Invite CCAC and LTC to participate in Pilot Project



# Recommendations (Con't)

## 3. Work with Health and LTC through the CCAC

- Share knowledge between the sectors
- Share report with CCAC and seek a liaison
- Request instruction for placing clients on list for LTC

## 4. Conduct a Pilot Project

- Propose to participate in cross sector pilot project
- Offer workshops to MOHLTC agencies



# Recommendations (Con't)

## 5. Work with LTC operators

- Provide in-services for LTC agencies on:
  1. Behaviours and Management Strategies
  2. Normalization
  3. Quality of Life
  4. How to group people in LTC homes

## 6. Work with the Client

- Develop plan of care with active involvement



# Recommendations (Con't)

## 7. Work with the Family

- Build trust
- Invite participation in community events and trainings
- Educate and inform of options

## 8. Work with the public

- Seek out opportunities to mainstream and include people with ID in everyday public life (e.g. day program for seniors)



# Recommendations (Con't)

## 9. Develop a Stronger DS System

- Become a member of OPADD
- Participate in research and accreditation processes

## 10. Expand and Develop the Role of AIR

- Develop procedures for DS sector to work with AIR and CCAC expanding services to collect, track and analyze people accessing LTC
- Hire registered nurse to work inside DS sector



Any Questions so Far?



# Committee Accomplishments

- Good linkages established with two long term care facilities
- Active participation on committee from membership, including LTC, Mental Health and Networks of Specialized Care
- Proposal went in for Aging at Home with LHIN. Successful in first stage but not in second stage. Committee was proposing to begin Seniors Day Program, Outreach Worker and Education and Resource sharing



# Committee Accomplishments

- Membership with OPADD
- Membership with Hamilton, Niagara Regional OPADD committee to share best practices
- Successful Educational workshop in December 2008 with 100 attendees



# Committee Accomplishments

- Presentation to Guelph Wellington Networks of Senior Care with agreement to collaborate and work together
- Recognition from MCSS for work completed in community
- Requests to speak to LTC providers and Dementia Network
- Presentation with SHRTN



# Future Directions for Committee

- Continue to engage CCAC and LTC providers at committee level
- Promote projects that address the challenges of seniors with ID
- Exchange information and provide mutual support among members
- Identify and address service/system issues
- Coordinate and/or integrate services and supports

# Future Directions for Committee

- Develop a shared vision and set of service/funding priorities, and communicate these to funders and appropriate others
- Collect information on demands for service, use of resources, and perspectives on current services and supports
- Promote the needs and interests of seniors with ID
- Continue to educate DS sector on LTC services



# Future Directions for Committee

- Liaise with regional organizations who have an interest in the health and well-being of seniors with ID
- Re-Apply for next announcement of funding with LHIN Aging at Home Initiative
- Explore trainings/workshops and funding to educate and work alongside LTC identifying and dispelling myths about persons with ID and LTC



QUESTIONS?

